

# Reduce IT Costs & Boost Agility, Productivity, & Security with Citrix Cloud VDI Solutions on Azure



**CORNERSTONE.IT**

**citrix**<sup>TM</sup>



10/15/2020

Copyright © Cornerstone.IT 2020

# Presented By



**Jim Moreo**

Principal

**Cornerstone.IT**

**[Jim.Moreo@Cornerstone.IT](mailto:Jim.Moreo@Cornerstone.IT)**



**Ryan Friess**

Technology Consultant II

**Ingram Micro / Citrix**



# Agenda

- **Cornerstone.IT & Citrix**
- **Citrix & Microsoft**
- **Overview of Windows Virtual Desktops (WVD)**
- **How Citrix Improves the WVD experience**
- **Windows Virtual Desktop with Citrix Workspace and IGEL, including WVD Integration**
- **LIVE Demonstration!**

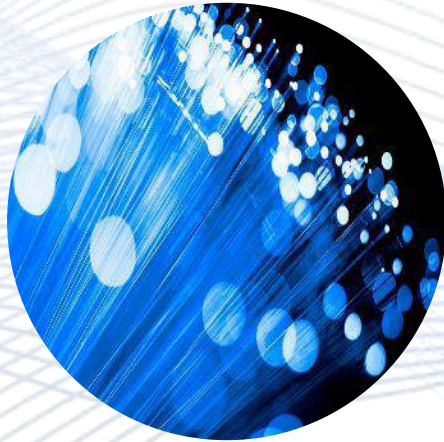
# About



# CORNERSTONE.IT



Experience



Solution Design



Best Practices



Systems Integration



Managed Services



Channel Futures.  
**MSP 501**  
2019 WINNER



Gold  
Microsoft Partner  




# Work From Anywhere

with  CORNERSTONE.IT



TECHNOLOGY  
SERVICES



EMPLOYEE  
ENGAGEMENT



SECURITY



SUPPORT |  
MANAGED SERVICES

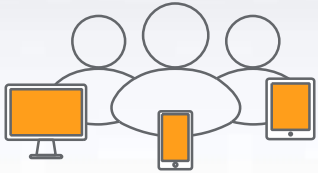
# 30 Year Partnership

citrix™ +  Microsoft

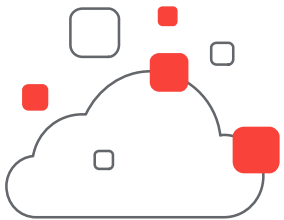


30-year  
partnership

90%  
Fortune  
100



400,000 joint  
customers



10's of Millions  
of users

- Integrated engineering for Day 1 support of Microsoft technologies
- Citrix chose Azure as its preferred and strategic cloud for customers and itself
- SD-WAN preferred partner for Azure Virtual WAN and Microsoft's "Works with Office 365" partner
- Citrix ADC preferred partner for Azure DNS
- Day 1 **Authorized** Windows Virtual Desktop provider
- Microsoft Cloud Solution Provider "CSP" – Tier 1
- Citrix and Microsoft joint Cloud Alliance partner initiative
- Microsoft Gold Certified Global ISV



# Windows Virtual Desktop (WVD)

# Windows Virtual Desktop



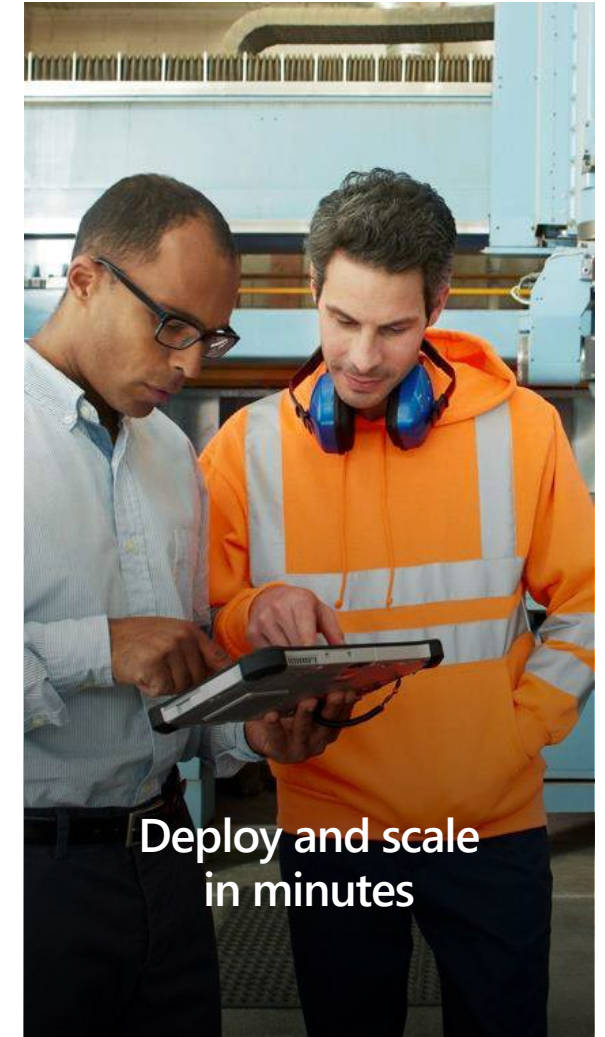
Full Windows 10 and Office 365 experience



Optimized for Office 365 ProPlus



Migrate your existing Windows Server (RDS) environment to Azure



Deploy and scale in minutes



# What is WVD?

The evolution of RDS - only available in Azure

- **A New Entitlement** for M365 E3+ or Windows E3, E5, F1 or Business SKUS
- **An Azure Service** - the next generation of Remote Desktop Services (RDS), only in Azure
- **A new Windows 10** multi-session OS only licensed as part of WVD in Azure
- **Windows 7 Virtualization Rights** with extended security updates on WVD in Azure

The screenshot shows the Windows Virtual Desktop (WVD) product page. At the top, it says "Windows Virtual Desktop" with "PREVIEW" in the top right corner. Below that is the tagline "The best virtual desktop experience, delivered on Azure" and a green "Start free >" button. A navigation bar includes links for "Product Overview", "Features", "Pricing >", "Documentation >", "Getting started", and "FAQs". The main content area features a heading "Deploy and scale virtualized Windows desktops and apps on Azure" followed by a paragraph describing WVD as a comprehensive desktop and app virtualization service. Below this are four feature cards, each with an icon and a brief description:

- Deliver the only multi-session Windows 10 virtual desktop experience**: Provide your users with the only multi-session Windows 10 desktop virtualized in the cloud that's highly scalable, always up to date, and available on any device.
- Enable optimizations for Office 365 ProPlus**: Deliver the best Office 365 ProPlus experience, with multi-session virtual desktop scenarios to provide the most productive virtualized experience for your users.
- Migrate Windows Server remote desktops and apps to Azure**: Migrate your Remote Desktop Services (RDS) environment with simplified management and deployment experience on Azure.
- Deploy and scale in minutes**: Quickly virtualize and deploy modern and legacy desktop apps to the cloud in minutes with unified management in the Azure portal.

# Why CITRIX + WVD?

The best ISV solution

- Citrix & Microsoft **joined** forces to simplify cloud transformation and speed adoption of digital workspaces and virtual desktops to enable greater agility, productivity, and security
- Citrix is **authorized by Microsoft** to extend WVD's capabilities to Citrix cloud subscription customers (and partners delivering to those customers!)
- Citrix Cloud has many advantages for partners over rolling-their-own, including pre-provisioned services, included **support** and **onboarding customer success services**
- Citrix Cloud and Workspace can deliver WVD resources to your customers **right alongside** the SaaS, mobile, virtual, and physical apps they do today!
- The question isn't Why Citrix + WVD, but *why wouldn't you* **enhance your existing offering** by including WVD to build new differentiated offerings to benefit your customers?

Citrix and Microsoft partner to accelerate the future of work

July 14, 2020 | Microsoft News Center



*Companies join forces to simplify cloud transformation and speed adoption of digital workspaces and virtual desktops to enable greater agility, productivity, and security*



# **Citrix + WVD benefits**



# Top10

## Citrix value adds to Windows Virtual Desktop

### Hybrid Cloud



### Citrix HDX Technology



Certified for

Microsoft Teams



### Citrix App Protection

### Workspace Environment Management



### Advanced Monitoring



### Session Recording



### Citrix App Layering



### Citrix Performance Analytics



### AutoScale



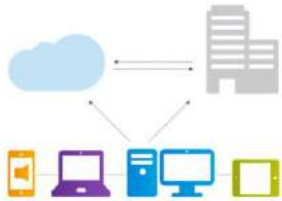
### Citrix Security Analytics



# 1

# Simplified & Flexible Management

Spend less time managing, more time selling



## Hybrid Cloud Deployments

- CVAD service can centrally manage and deliver existing, on-premises virtual app and desktop workloads side-by-side WVD workloads
- Makes it easy to transfer new workloads to Azure while supporting existing applications located in the datacenter



## Machine Creation Services

- Rapidly provision WVD workloads across various Azure resources locations on-demand from a master image
- Intelligently manage the availability of those resources based on a predefined schedule or the level of user demand



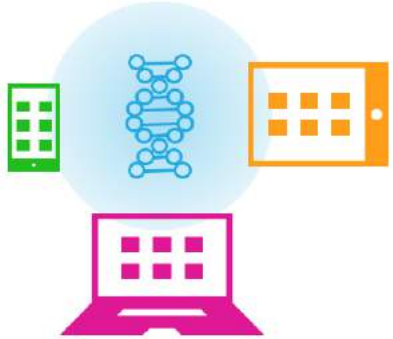
## Citrix App Layering

- Included in CVAD service
- Simplifies image management of WVD workloads – Windows 10 multisession, Windows 10 Enterprise, and Windows 7 hosted on Azure
- Separates the workloads into flexible containers, or layers, so CSPs can package and deploy operating system updates, applications, and user data as individual components and then dynamically reassemble them for deployment at scale

# 2

## Security

Stop paying extra for security technologies with Citrix's built-in features

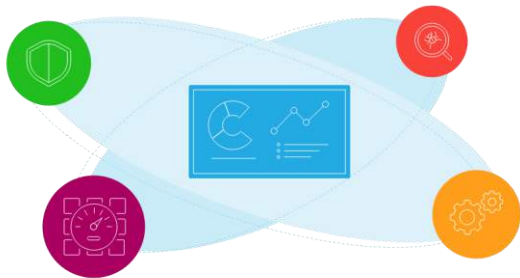


### Application Protection Policies

- For regulated industries
- Protect enterprises against compromised user devices which might have key loggers or screen scraping malware installed

### Citrix Analytics for Security

- Monitors the entire Citrix Workspace and WVD deployment to scan for security threats in real-time
- Enables CSPs to proactively handle user and application security threats



### Secure Browser

- Protects the corporate network against malware, ransomware and data theft.
- Delivers secure, remote access to a cloud-hosted web browser thereby isolating and protecting the corporate network.

# 3

## Optimize Performance

### Save money on Azure-hosted workloads

#### Workspace Environment Management



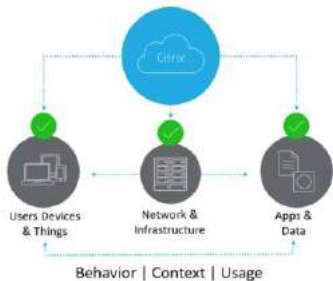
- Included in CVAD service
- Actively monitors WVD resource utilization and dynamically adjusts based on user profiles, system policies, and resource consumption
- Improves the scalability of the infrastructure hosting your virtual apps and desktops by optimizing resource utilization — saving CSPs time and money
- Simplifies the administration of Windows 10 policies — which improves both user experience and application security

#### Auto Scale (previously Smart Scale)



- Enables proactive scaling and power management of registered machines in a Virtual Apps and Desktops Site based on a schedule CSPs define or the level of demand for user sessions
- Enables CSPs to ensure that WVD workloads are available when needed, yet restrict overprovisioning of resources that could result in cost cloud infrastructure costs during idle times

#### Citrix Analytics

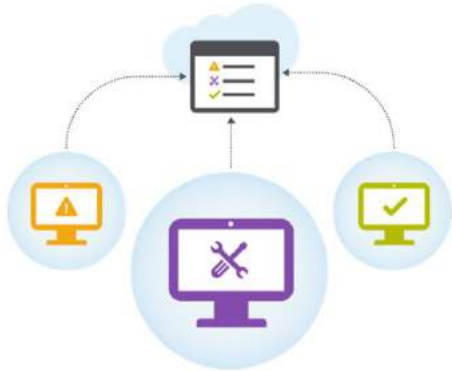


- Monitors the entire Citrix Workspace and WVD deployment to scan for performance issues or security threats in real-time
- Enables Citrix customers to proactively handle user and application security threats, improve app performance, and support continuous operations

# 4

## Robust Monitoring

Reduce support costs and time-to-resolution



### Citrix Director

- Gives insights into a year's worth of performance data
- Provides a view of capacity trends, OS usage reporting, proactive notification and alerting, and reboot warnings
- Track the customer log-on times and see which parts of the logon process are causing slowness – from brokering to interactive session
- CSPs can control a user's session from the Director console, taking helpdesk actions like logging off a session, disconnecting it, sending a message to a user, or shadowing a session



### Citrix Session Recording

- Record on-screen activity of any virtual app and desktop session for retrieval and playback to aid in troubleshooting and user education
- Uses flexible policies to trigger recordings of application sessions automatically



# 5

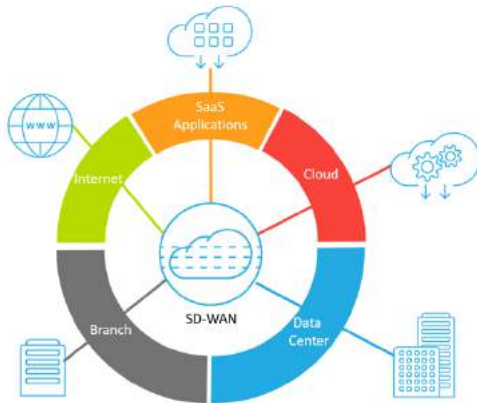
## Improved User Experience

Happy customers, continued business, & upsell/expand opportunities



### Citrix HDX Technology

- Provides a superior virtual app and desktop experience from any device over any network, including low-bandwidth, high-latency networks
- Includes:
  - Peripheral plug-n-play technology – USB, printers, scanners, headsets
  - Adaptive Transport to automatically adjust to changing network conditions
  - HDX 3D Pro deliver High-Def 3D graphics
  - Voice, video and multimedia redirection for improved performance and scalability
  - Optimized unified communications performance, including Microsoft Teams and Skype for Business
  - Universal printing across any printer/print server



### Citrix SD-WAN

- Add-on solution, carrier agnostic
- Accelerates remote connectivity to WVD workloads hosted in Azure while also optimizing the connectivity to Office 365
- Users experience performance benefits using Office 365 and virtual desktops

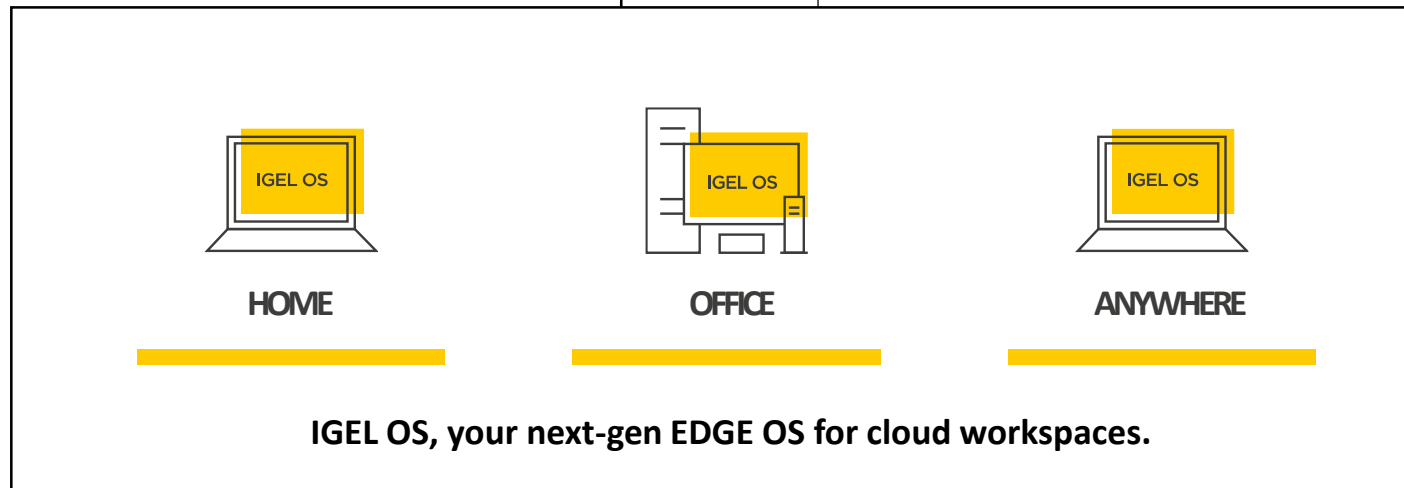
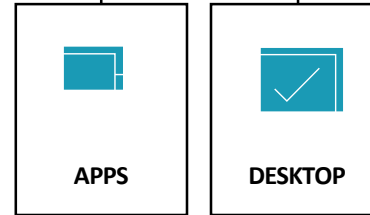


**IGEL + Citrix +  
WVD benefits**

The IGEL OS is: a  
purpose-built OS for  
cloud & virtual  
environments  
that is secure &  
easy to manage



## ANY CLOUD ANY DEVICE



### 3-YEAR TCO PER ENDPOINT

IGEL OS Endpoint: \$1,159  
Windows PC: \$3,426

**66% Savings**



### 3-YEAR TCO PER ENDPOINT

IGEL OS Endpoint: \$1,159  
Windows PC: \$3,426

**66% Savings**



# TCO

....c'mon no ROI on operational expenses!

### 3-YEAR TCO PER ENDPOINT

IGEL OS Endpoint: \$1,159  
Windows PC: \$3,426

**66% Savings**



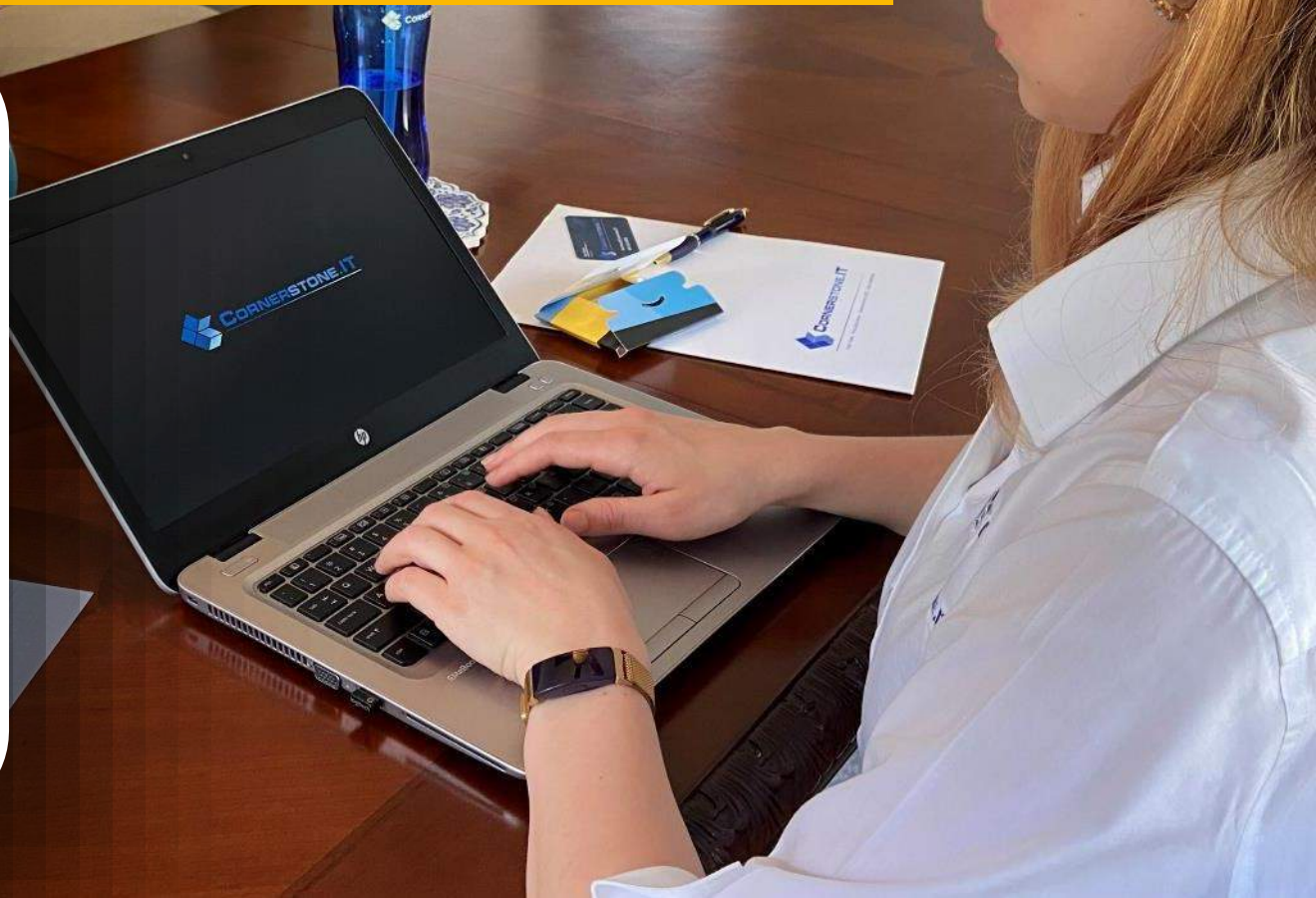
# Complete Your Remote Access Environment with



CORNERSTONE.IT

&

IGEL® UD POCKET



An abstract graphic consisting of a dense, tangled mass of thin, light blue lines. The lines form a roughly spherical shape in the center, with several lines extending outwards, particularly towards the top right and bottom left, creating a sense of motion or a digital network.

# LIVE DEMO

**WVD + Citrix + IGEL**

# Have questions?

**Jim.Moreo@Cornerstone.IT**

**646.530.8920**

**www.Cornerstone.IT**



**CORNERSTONE.IT**



# Thank You!



**CORNERSTONE.IT** + citrix™